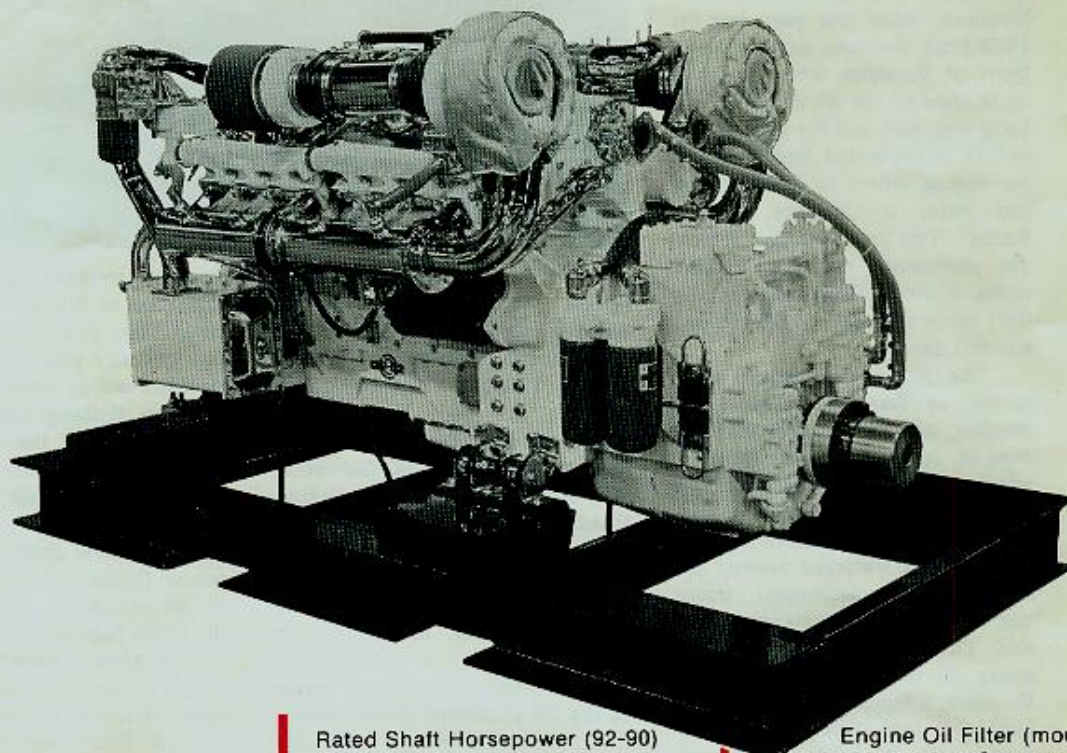




FROM THE UNITED ENGINES, INC.  
MARINE POWER LINE

# MODEL 12V-92TAM



## BASIC SPECIFICATIONS:

Model	8122-7400
Engine Type	2-Cycle
Number of Cylinders	12
Bore & Stroke	4.84 in. x 5 in.
Displacement	1104 Cu. in.
Compression Ratio	17 to 1
Net Weight (Dry)	5900 Lbs.
(Including Marine Gear)	
Dimensions:	92.375 in. Length
	50.00 in. Width
	51.00 in. Height
Available Ratios:	1.55 to 1
	2.03 to 1
	3.09 to 1
Installation Angle	0-15°

## POWER SPECIFICATIONS:

Rated Shaft Horsepower (92-115)  
(Pleasure Craft Applications)  
\*875 @ 2300 RPM

Rated Shaft Horsepower (92-90)  
(Commercial and Crew Boat)  
\*675 @ 2300 RPM

\*Rated Power at SAE Std. Conditions  
85°F Air Inlet Temperature,  
29.00 in-hg - Barometer Dry.

## STANDARD EQUIPMENT:

Watercooled Exhaust Manifolds  
(Cooled from exhaust outlets at the head)

Aftercoolers  
Flange Mounted 24 volt Alternator  
24 Volt Starting Motor  
24 Volt Governor Kill Solenoid  
24 Volt Emergency Kill Solenoid  
(Air box damper shut-off for positive kill)  
Raw Water Pumps - Flange Mounted  
Fuel Cooler  
Front and Rear Engine Mounts  
Secondary Fuel Filter (mounted)

Engine Oil Filter (mounted)  
Variable Speed Governor  
Heat Exchangers - Engine  
Heat Exchangers - Marine Gear  
Propeller Output Flange  
Vibration Dampener  
Tachometer Drives (2)  
Jacket Water Pump  
Engine Lifting Eyes  
Marine Gear Lifting Eyes  
Air Intake Silencers  
Factory Testing  
Exhaust Outlet Flanges  
Expansion Tank - Shipped Loose  
White Emron Finish

## OPTIONAL EQUIPMENT:

Engine and Marine Gear Instruments  
Primary Fuel Filter  
Yachtsman's Special Dress-Up Kit  
Show Quality Dress-Up Kit  
Automatic Emergency Shutdown System